

Vitals Mobile Operation Quick Guide

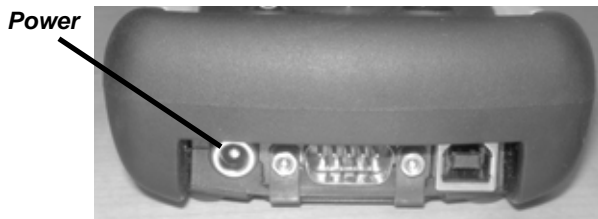


This Quick Guide highlights the features of Vitals Mobile used in the field. For complete instructions, see the *Vitals Reference Manual* available in electronic form on the Vitals disk.

CHARGING THE VITALS CONTROLLER

Before you use the Vitals controller for the first time, charge it for 12 hours using the included charging cable. You can charge it any time using this cable.

When the controller is connected to the ERV-750, plug in the charging connector on the ERV cable. This will keep the controller charged.

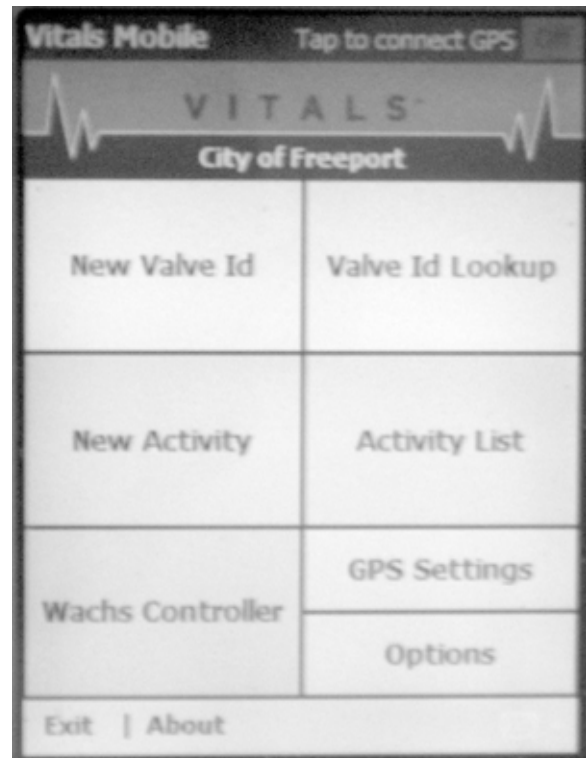


STARTING VITALS MOBILE

- To turn the Vitals controller on or off, press the Power button.



- To start Vitals Mobile, tap the **Start** menu and click **Vitals Mobile**. The Vitals Mobile main screen appears.



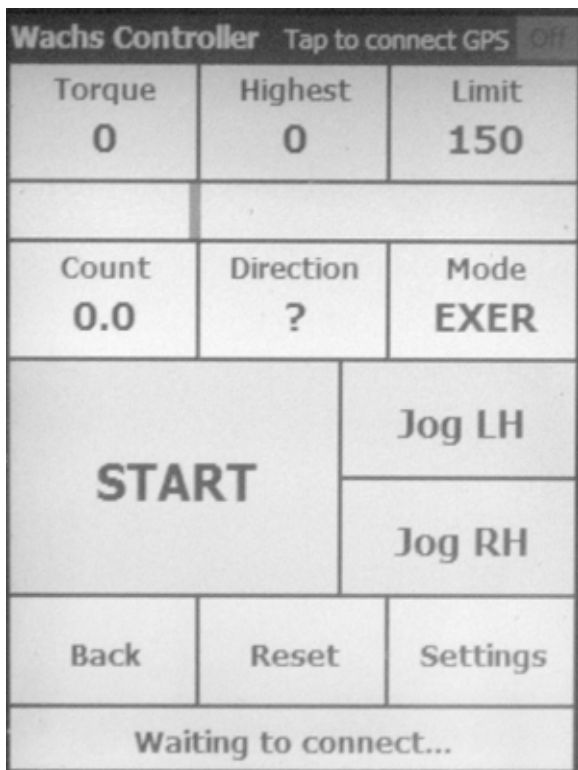
- To connect to the optional GPS module, tap the red **GPS Off** button at the top right of the screen. The button will turn green.
- To run the valve operator without logging valve data, tap the **Wachs Controller** button. See “Wachs Controller Operation” below.
- To operate the valve operator while logging valve data, start by tapping the **New Activity** button. See “Valve Operation with Data Logging” below.

- To quit Vitals Mobile, tap the **Exit** command at the bottom left of the main screen.

WACHS CONTROLLER OPERATION

The Wachs Controller is the control program for operating the ERV-750 valve operator. Make sure the ERV-750 cable is connected to the controller.

- On the Vitals Mobile main screen, tap the **Wachs Controller** button. The Wachs Controller screen appears as shown below.



- To change the torque limit setting (shown in the **Limit** box), tap the **Settings** button. Select a **Default Torque Limit** and tap the **OK** button. Then tap the **Reset** button.
- To turn the valve operator slowly in either direction (for positioning or installing the valve key), tap and keep touching the **Jog LH** or **Jog RH** button.

- By default, the valve operator mode is **EXER**, which runs the valve exercising protocol. To operate in manual mode, tap the "Mode" button to change it to **MAN**. **NOTE:** See the Vitals Help File on the Vitals disk for a complete description of the automated exercising procedure.
- To override the automated exercising program and set a starting direction, tap the **Direction** button until either **RH** or **LH** appears. (Leave the question mark in the display for automatic direction control.)
- Press **Start** to begin the valve operation. The valve operator will run in the selected mode. The button will change to say **Stop**.
 - The **Torque** field will display the current operating torque.
 - The **Highest** field will display the highest torque level during the current operation.
 - The **Count** field will display the number of revolutions.
- Press **Stop** to end the valve operation. The button will change to say **Start**.
- To reset the valve operation readings and the operating defaults, tap the **Reset** button.
- To exit the Wachs Controller program, tap the **Back** button.

VALVE OPERATION WITH DATA LOGGING

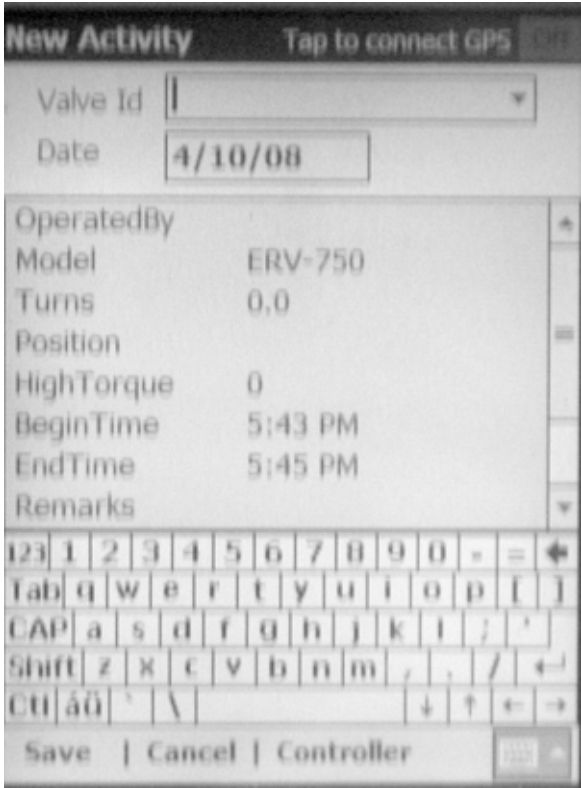
Enabling GPS

If you have the optional GPS receiver installed on your controller, you need to enable GPS if you want to automatically detect and log valve positions.

1. Tap the **Tap to connect GPS** command at the top of the screen. The command will change to say **Waiting for fix**.
2. It may take up to several minutes to detect satellite signals and fix location. When a fix is established, the command will display signal information, starting with **HDOP** and a number.

Starting the Valve Activity

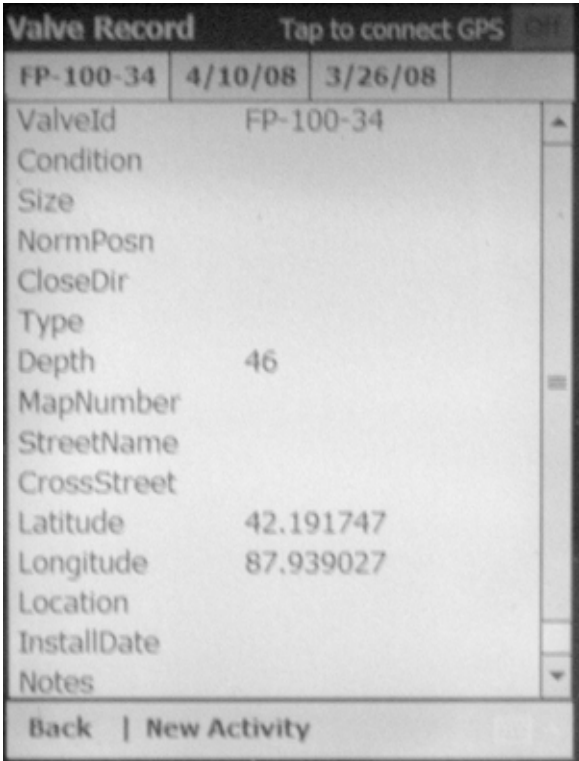
1. Tap the **New Activity** button on the Vitals Mobile screen. The New Activity screen appears with a keypad at the bottom.



2. You can choose an existing valve ID, or create a new one:
 - To use an existing valve ID, tap the arrow in the **Valve ID** drop-down menu, then tap the ID you want from the list that appears. (You must have already loaded the controller with

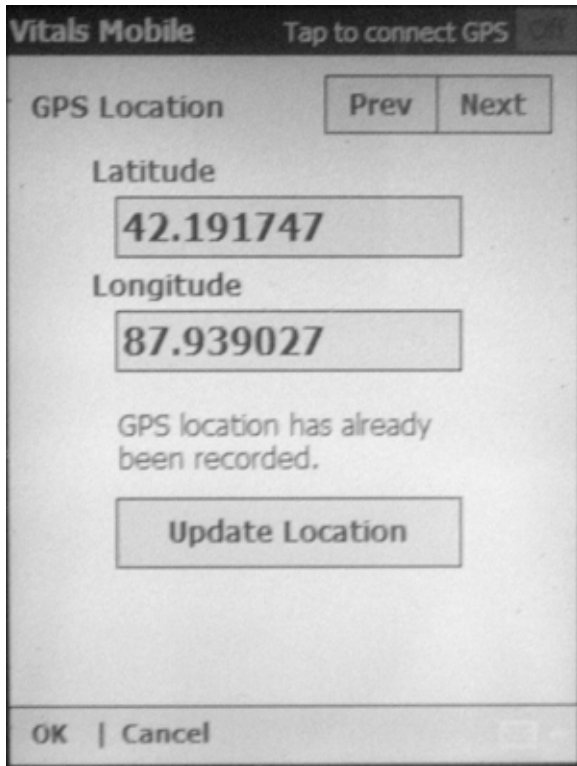
valve IDs, or created them using **New Valve ID** button.)

- To create a new valve ID, tap the keys on the keypad at the bottom of the screen to type the ID. Tap the Enter key on the keypad.
3. Tap the **Save** command at the bottom of the screen. The Valve Record screen appears.

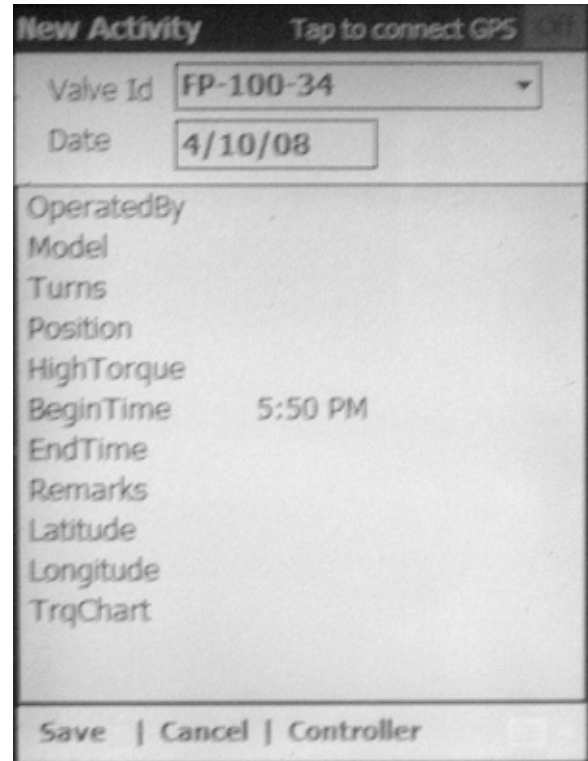


4. To enter data for any of the categories on the Valve Record screen, tap the category name. A data entry screen will appear. Enter the data and tap the **OK** button.

NOTE: If any of the data is present in the valve record, it will already be filled in.
5. To record GPS location, tap either **Latitude** or **Longitude**. When you have the GPS receiver enabled, the Location screen will appear with the coordinates filled in. Tap the **OK** button.



6. When you are finished entering data on the Valve Record screen, tap the **New Activity** command at the bottom of the screen. Click **OK** to confirm the changes.
7. The New Activity screen appears. Enter data for any of the categories by tapping the category name and typing on the data entry screen.



8. When you are finished entering data, tap the **Controller** command at the bottom of the screen. The data is saved and the Wachs Controller screen appears.
9. Operate the valve exerciser as described in the previous section. The valve data set will be saved.
10. For greater location accuracy, enable the GPS logging mode while running the valve exerciser. To do this, tap the button in the top right of the screen before you start the operation. The GPS status will say **GPS Logging On**. At the end of the valve activity, tap the button again to turn logging off.
NOTE: See the Vitals Help File on the Vitals disk for more technical information on GPS logging and signals.