

TC-110 FACTORY RESET

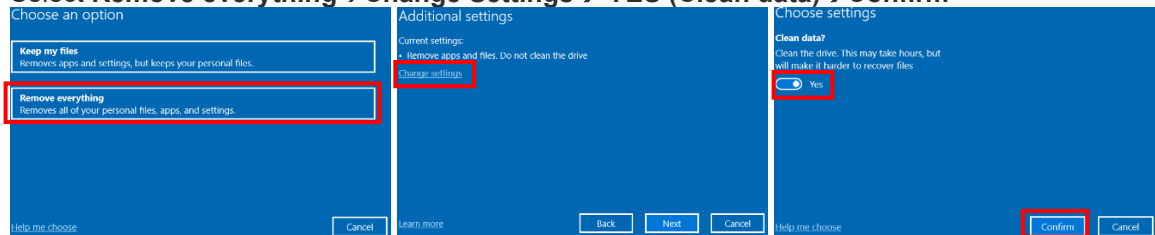
1/12/2026

If you want to set the TC-110 controller to factory defaults, follow the instructions below. After a factory reset, the user will have to go through the Windows 11 setup to create a new offline account. See **TC-110 Windows Setup** section for instructions.

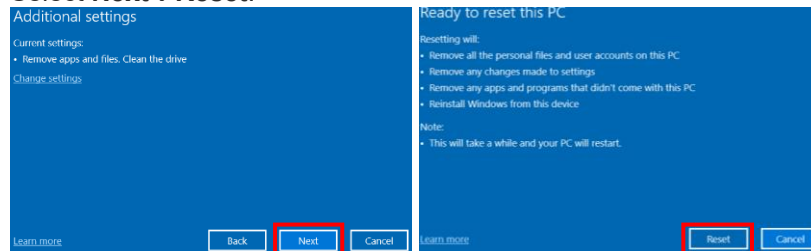
Option 1:

If you can access the current operating system, navigate to **Start > Settings > System > Recovery > Reset this PC (Get started)** then follow the instructions in each step below.

1. Select **Remove everything**→**Change Settings**→**YES (Clean data)**→**Confirm**



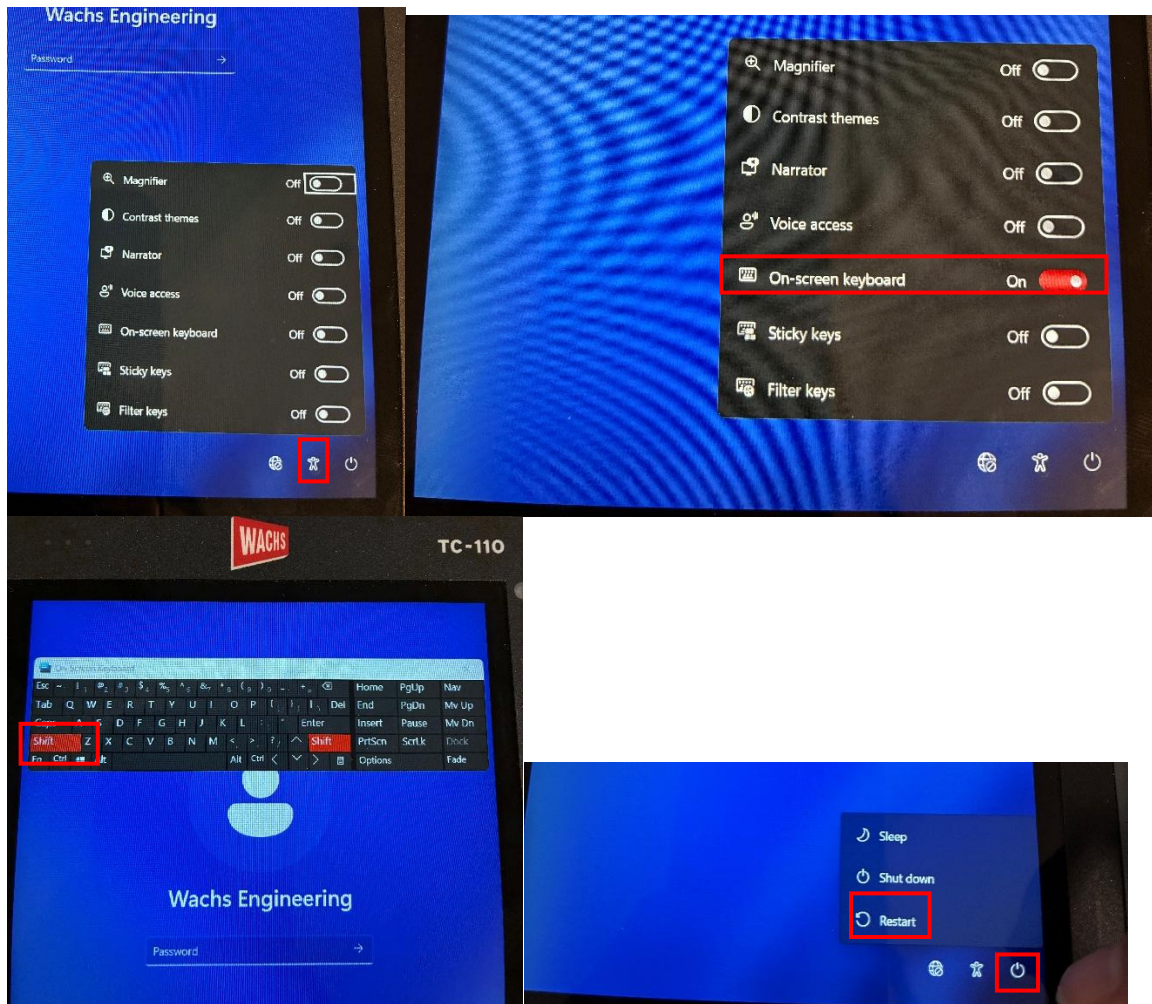
2. Select **Next**→**Reset**.



3. Set up a new account by following **TC-110 Windows Setup** instructions.

Option 2:

If you are not able to access the current operating system (stuck during boot process or forgot password), tap or **press the Shift button** (on screen or on an **attached USB keyboard**) **while performing a Restart**. If done correctly, you should see a menu with Troubleshoot (**Reset your PC**) option.



- Follow the same onscreen instructions as in Option 3 below (some windows might be in different order).

Option 3:

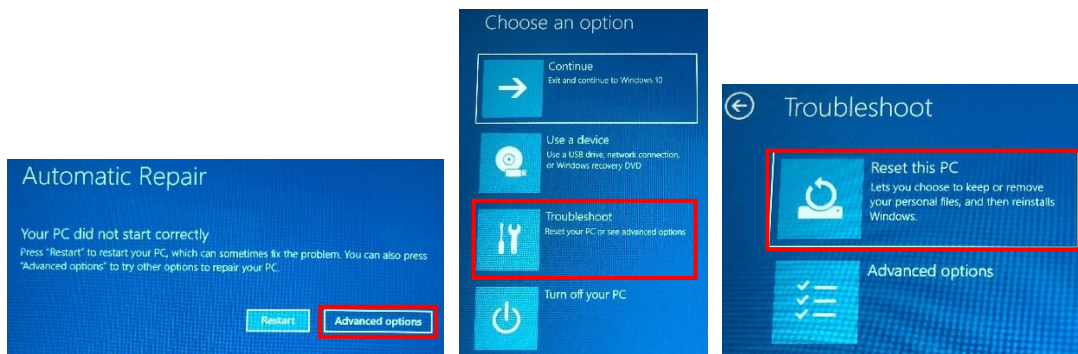
If options above did not work, try the following steps:

- **Press and hold the hardware Power button for 10 seconds**
- **Release power button while the red LED is flashing rapidly**
- Briefly **press the Power button** again, **wait 3-4 seconds**
- Immediately **repeat this process two more times**.

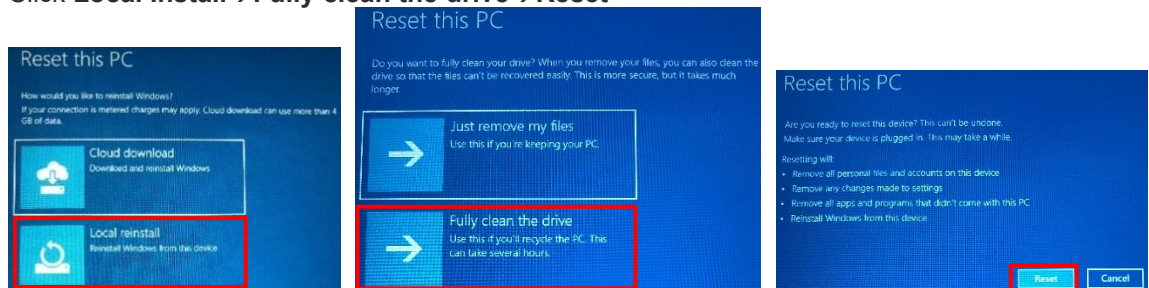
This will force the system to Restart before completing boot three times in a row will show “Diagnosing your PC” then the **Automatic Repair** menu as previously described.

Follow steps below after getting to the **Automatic Repair** window (some steps might be in different order depending on which option above you followed):

1. Click **Advanced Options**→**Troubleshoot**→**Reset this PC**.



2. Click **Local Install**→**Fully clean the drive**→**Reset**



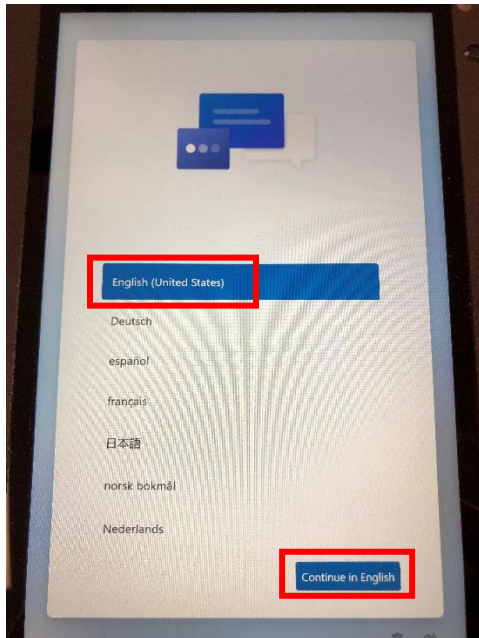
3. Wait for TC-110 to restore Factory Defaults.
4. Set up a new account by following **TC-110 Windows Setup** instructions below.

TC-110 Windows Setup (Win 11)

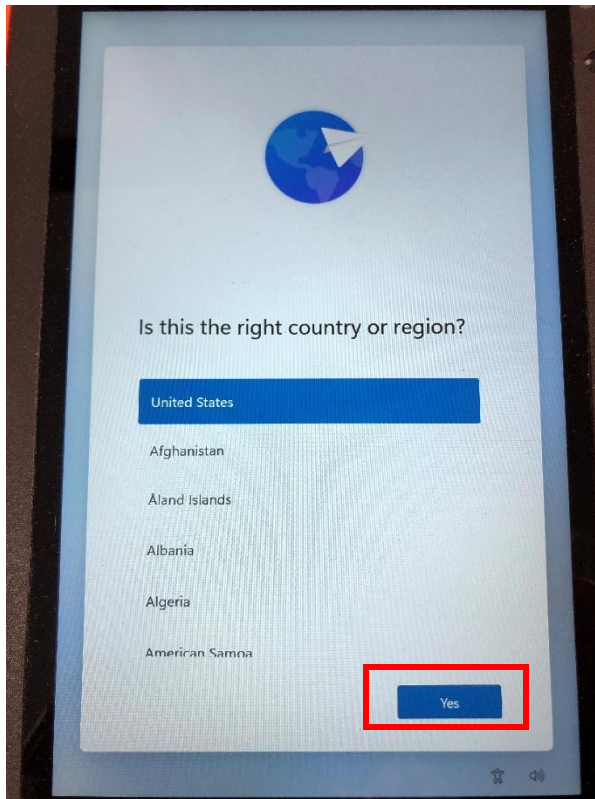
Follow this guide to set up a local offline account on the TC-110 (Windows 11). However, depending on the release the steps may be slightly different.

To setup Windows 11, follow these steps:

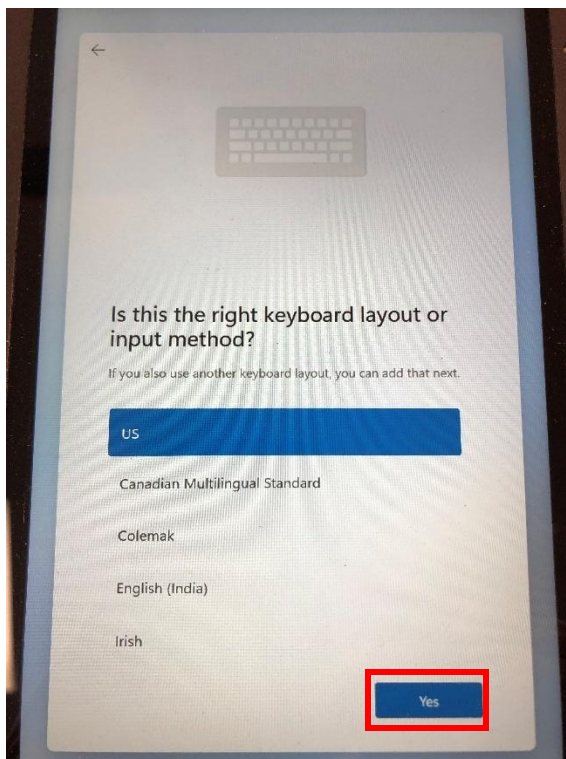
1. Select Language.



2. Select the **Continue in English** button.
3. Select your **Region** option.

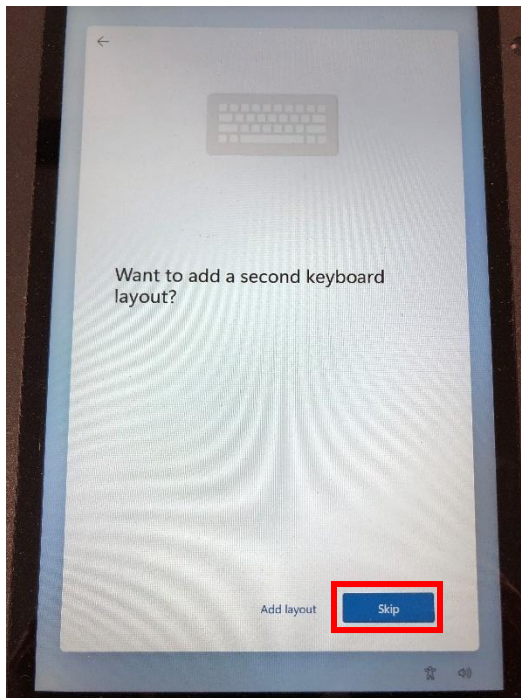


4. Click the **Yes** button.
5. Select your keyboard layout option.

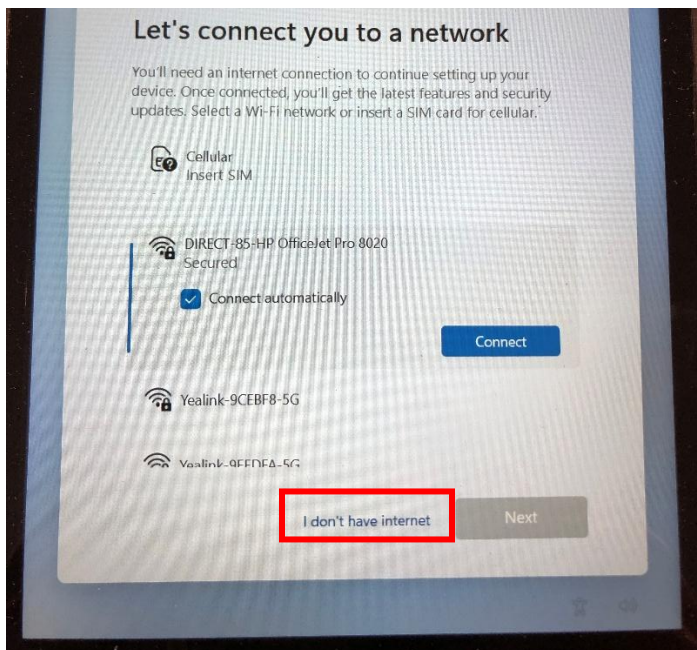


6. Click the **Yes** button.

7. Add second keyboard layout.

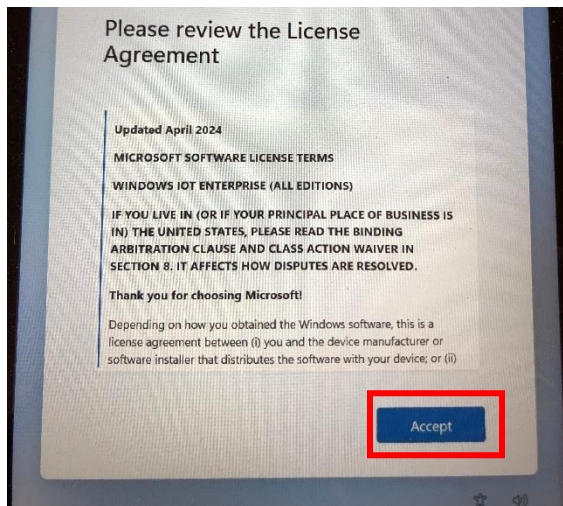


8. Click the **Skip** button (unless you need to add a second keyboard layout).
9. Connect you to a network.



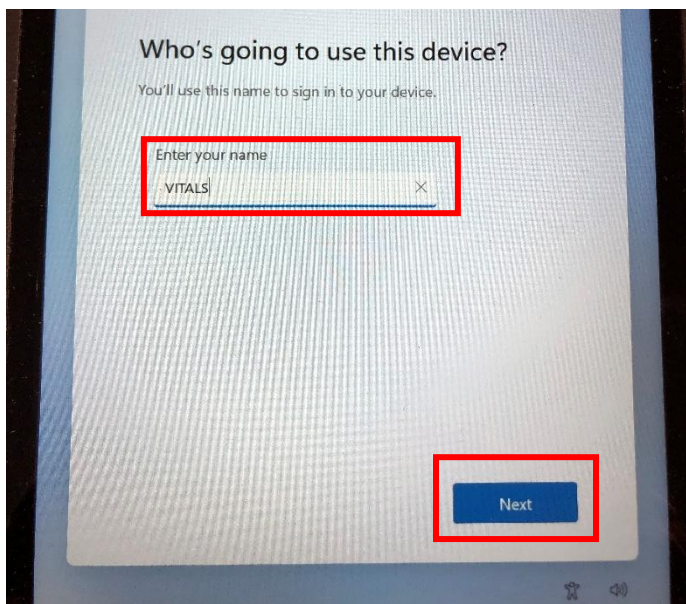
10. Click "**I don't have internet**" on the bottom left corner of the screen.

11. Windows 11 License Agreement



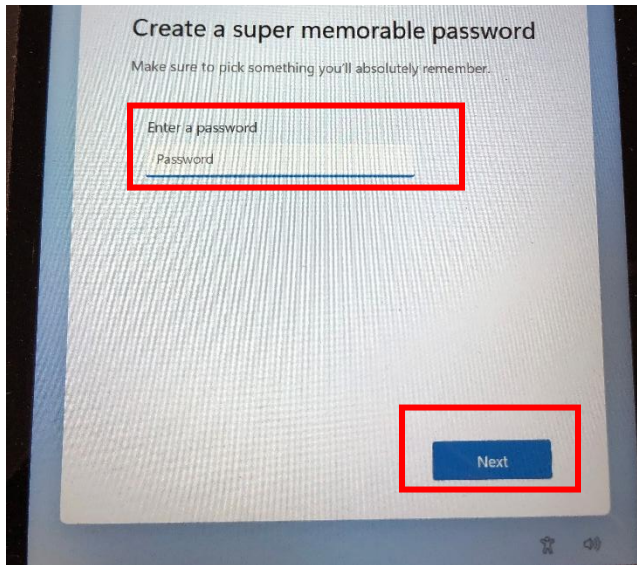
12. Click the **Accept** button.

13. PC Name.

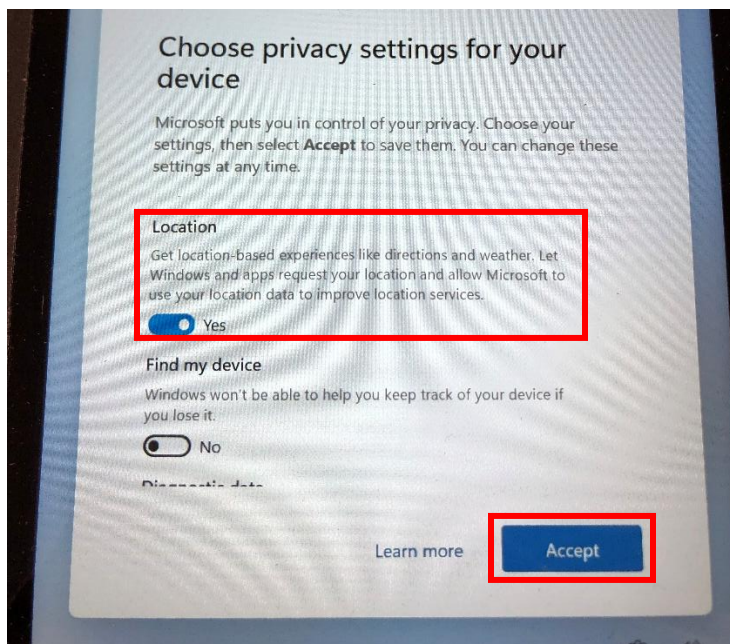


14. Enter a name for device (**VITALS** if unsure). Click **Next**.

15. Create a password.



16. Leave blank (no password) and click **Next**.
17. Privacy settings.



18. Select **YES** for **Location** (required for internal GPS). Everything else select **NO**. Click **Accept**.
19. Wait for the device to finish setup.

NOTE: Connect your device to the internet (Wi-Fi) to fully activate Windows. Vitals Mobile-TC software is factory installed on the TC-110.

Please visit: <https://www.turnvalves.com/VITALS-Manual/> for more information.

